



Beyond Feedback: Building Effective Student Voice Mechanisms

Chorus: Amplifying Student Voice through Creative STEAM Engagement

Priyanka Saini, Alya Ozalp, Colin Dragoi

Dr. Sharon Shannon and Adam Breen



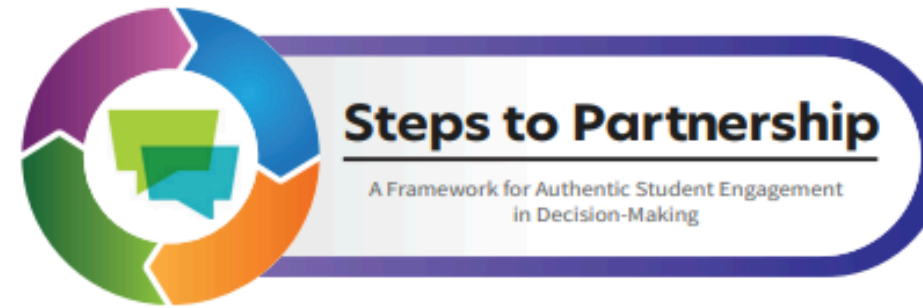
**National Student
Engagement Programme**
Clár Rannpháirtíochta Náisiúnta
na Mac Léinn



University College Dublin
Ireland's Global University



Taighde Éireann
Research Ireland



4 DRIVERS OF STUDENT ENGAGEMENT

A CULTURE OF STUDENTS
AS PARTNERS

THE INSTITUTION AS A
SITE OF DEMOCRATIC
CITIZENSHIP

THE INSTITUTION AS AN
INCLUSIVE LEARNING
COMMUNITY

A CULTURE OF
INSTITUTIONAL REFLECTION
AND ENHANCEMENT

4 DOMAINS OF STUDENT ENGAGEMENT



5 PRINCIPLES OF STUDENT ENGAGEMENT

- Dialogue
- Building Trust
- Equity and Inclusivity
- Empowerment
- Students as co-creators

5 ENABLERS OF STUDENT ENGAGEMENT

- Capacity Building
- Institutional Approaches
- Supportive Policies and Practices
- Communities of Practice
- Sustainability

DEVELOPING A SHARED UNDERSTANDING AND APPROACH TO STUDENT ENGAGEMENT IN DECISION-MAKING

STUDENT VOICE

STUDENT ENGAGEMENT

STUDENT PARTNERSHIP

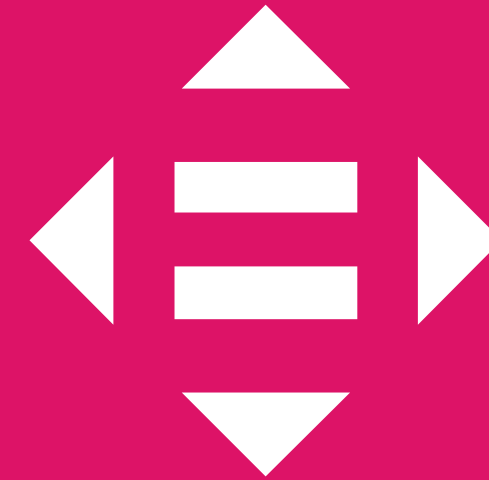
4 QUALITY
EDUCATION



5 GENDER
EQUALITY



10 REDUCED
INEQUALITIES



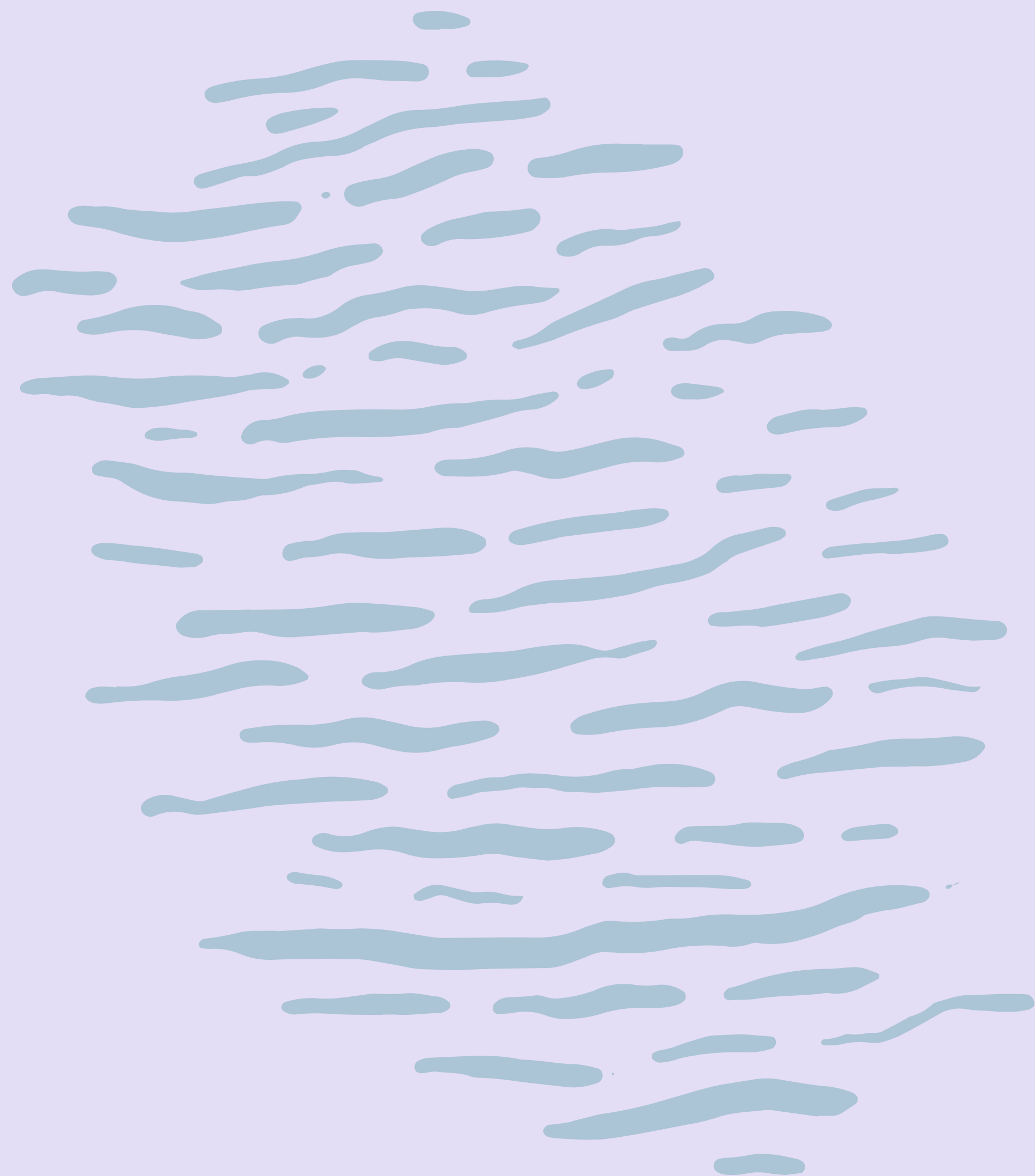
16 PEACE, JUSTICE
AND STRONG
INSTITUTIONS



17 PARTNERSHIPS
FOR THE GOALS

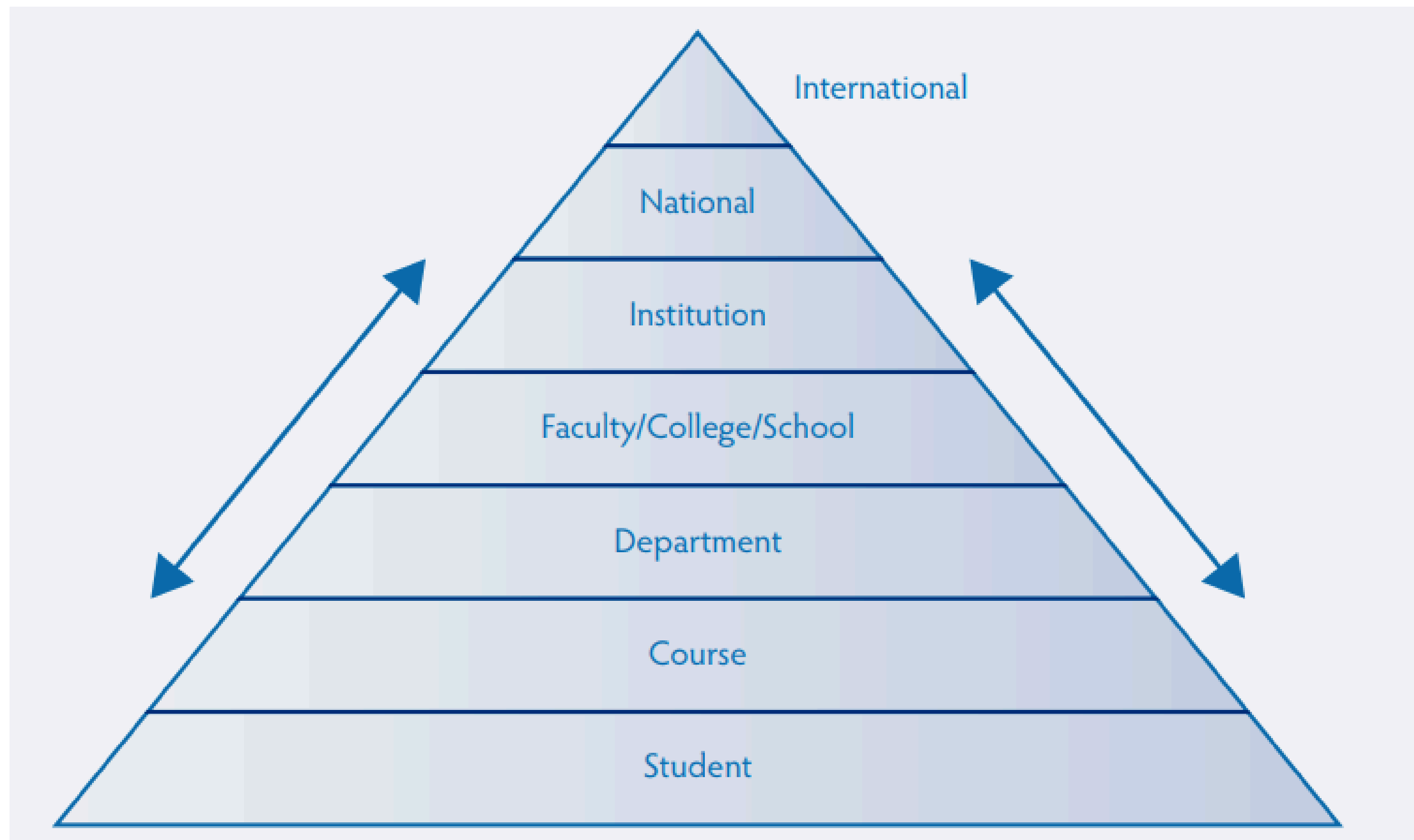


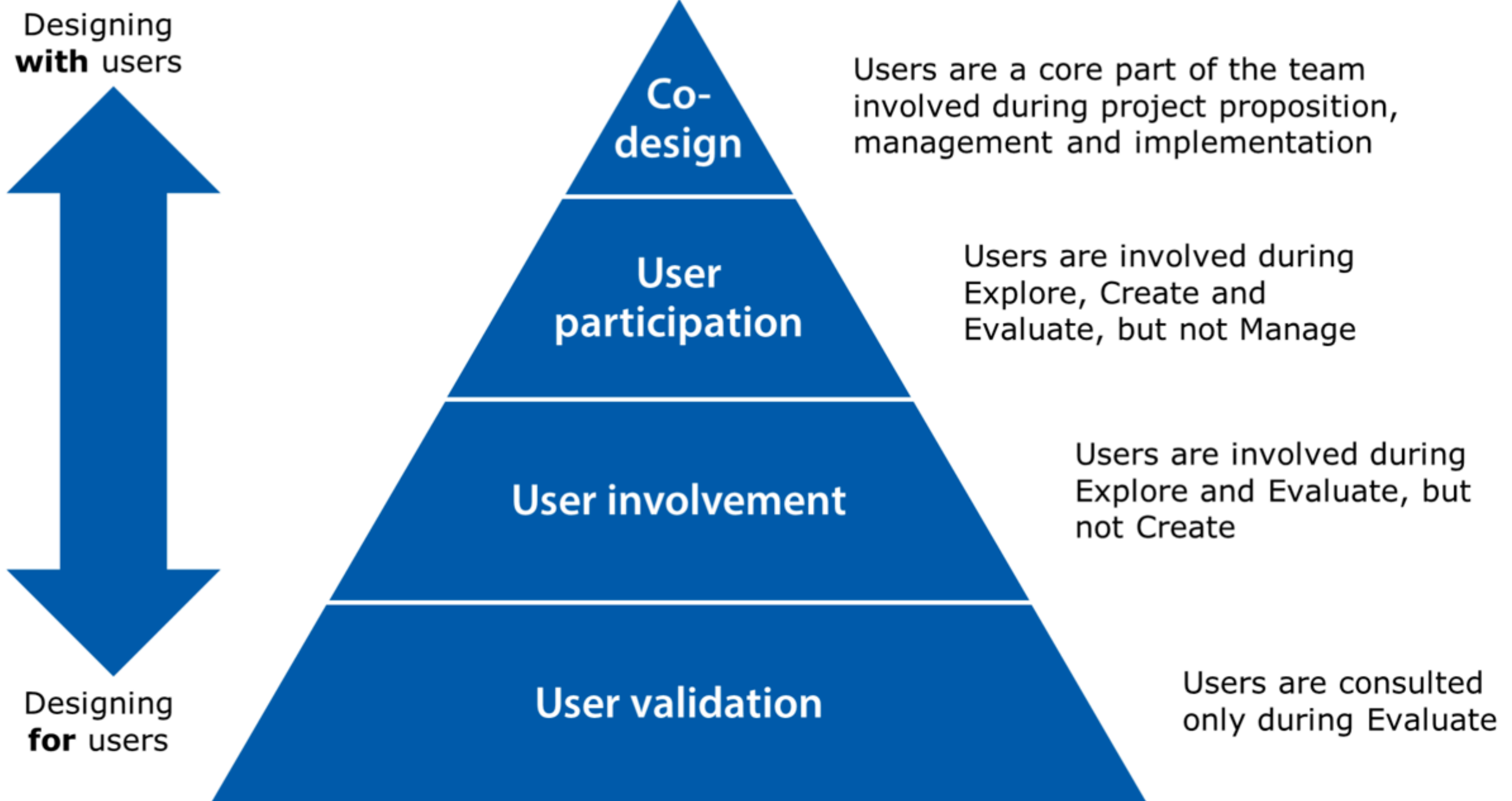
In physics, resonance happens when a small vibration meets another at just the right frequency, amplifying both, a transfer of energy that makes two systems move as one.



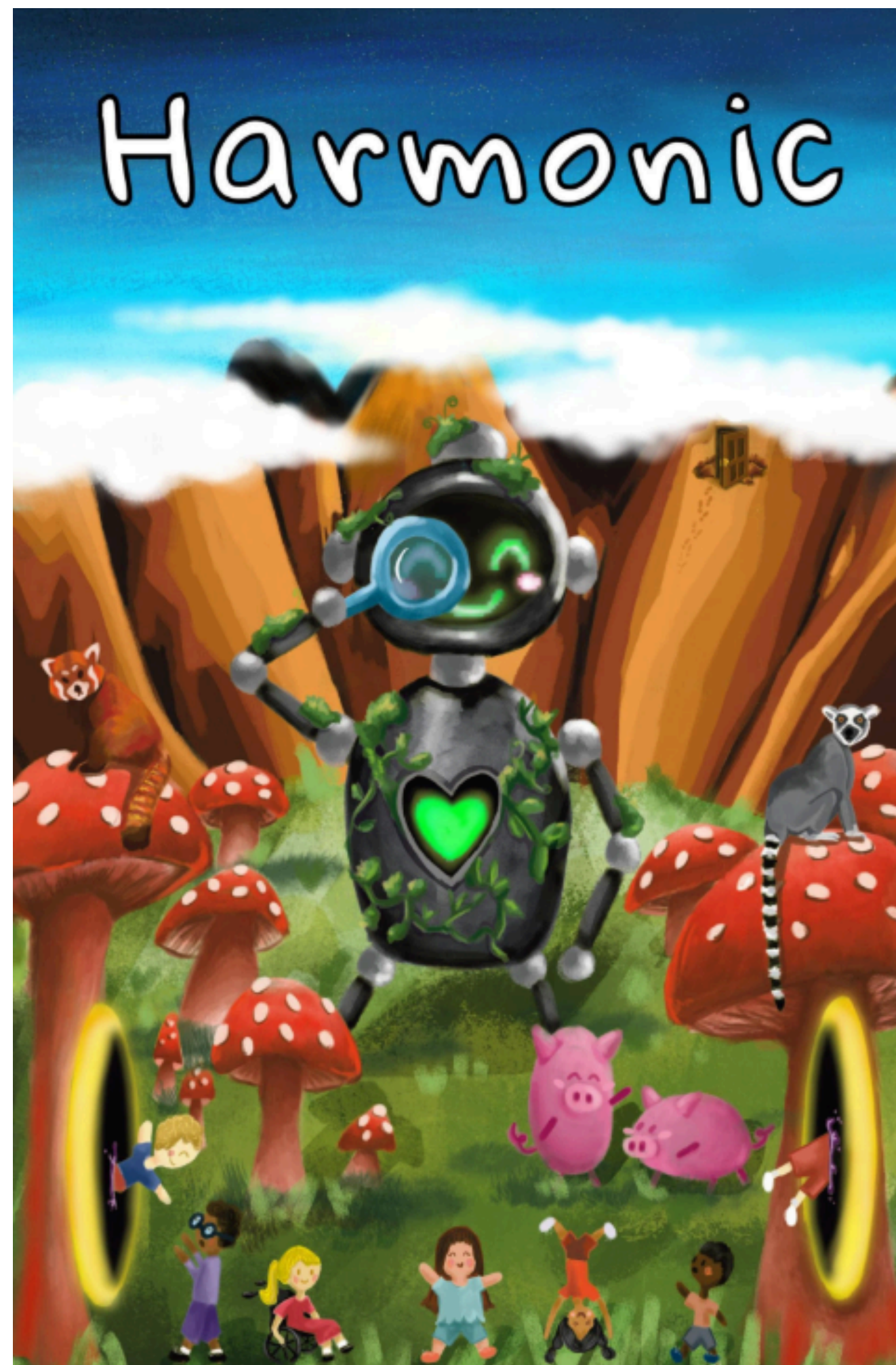


Daniel Biber





Healey *et. al.* (2014) and Stark *et. al.* (2021).



Rialtas na hÉireann
Government of Ireland



An Roinn Oideachais
Department of Education



This Project was **only** made Possible with the Collaborations and Partnerships between all these Institutions and with the Support and Awards from Science Foundation Ireland and the Department of Education Ireland.

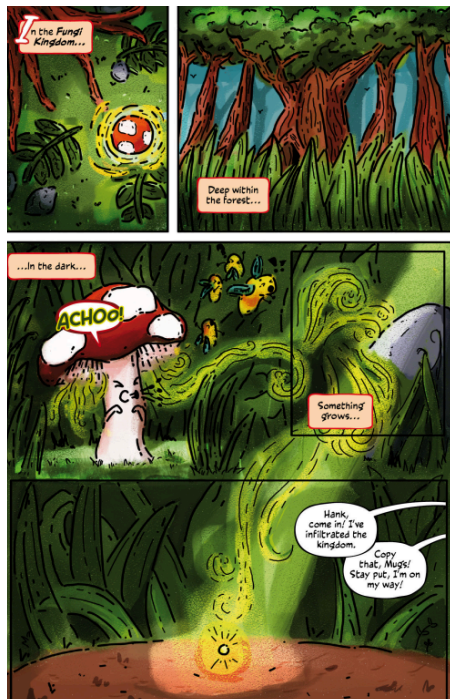
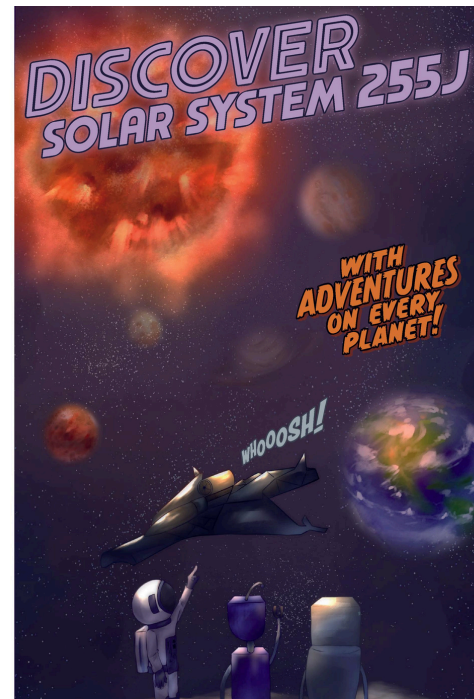
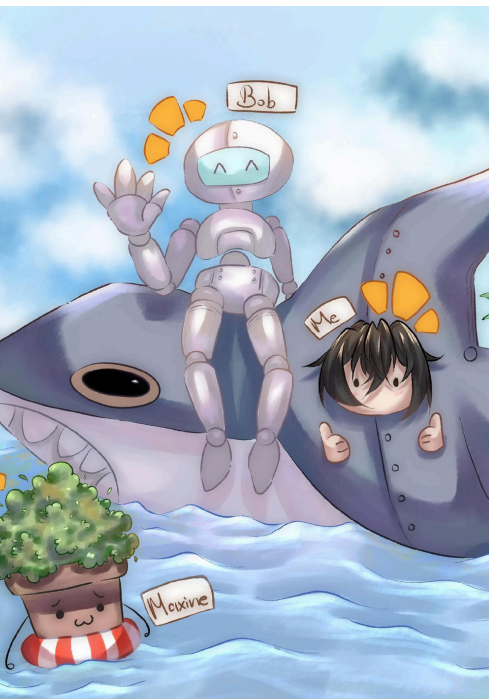
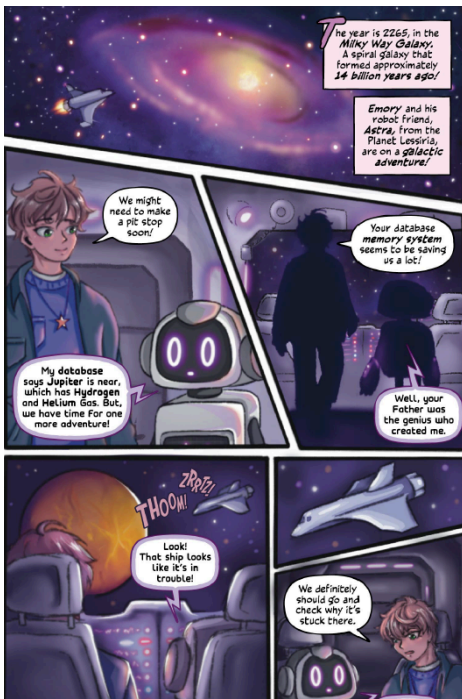
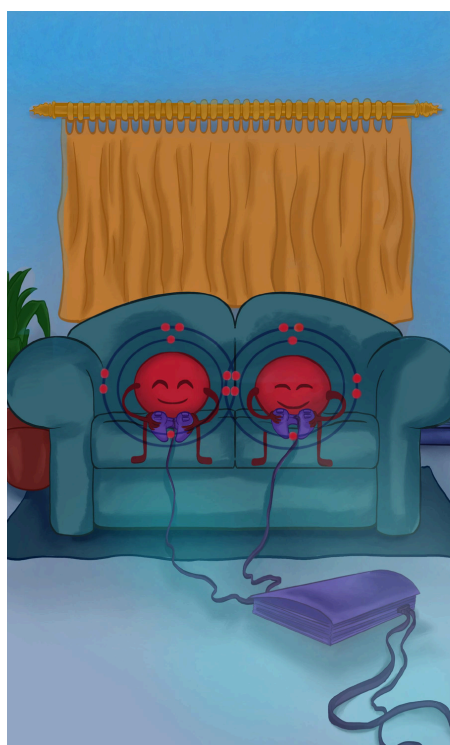
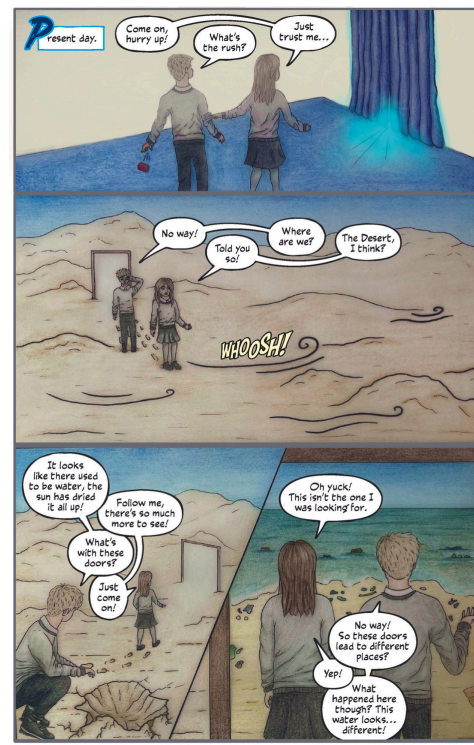
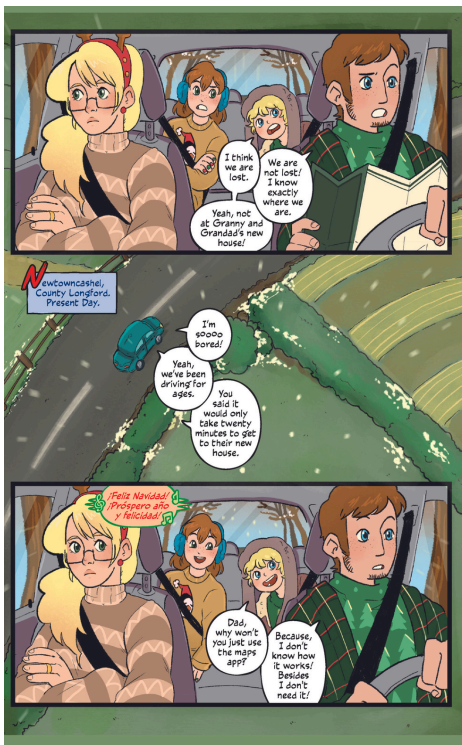
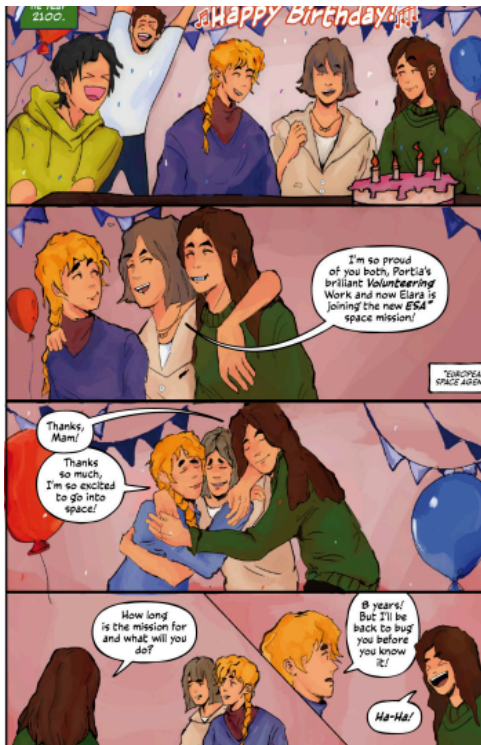


The creative team would like to sincerely thank all those who facilitated the realisation of our comic book. It has been a very exciting journey for us all and we are grateful to have made many new friends along the way!

Yours truly,

Team Harmonic

Examples from Harmonic Comic Book






University College Dublin
Ireland's Global University

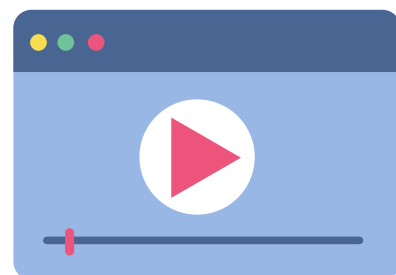


Taighde Éireann
Research Ireland



A national, multi-level ecosystem for inclusive STEAM learning. Bridging higher, further, post-primary, and primary education. Co-creation through creativity, inquiry, UDL, and reflective practice.





3rd Level Students Workshop Creators



2nd Level Students Workshop Participants



2nd Level Illustrated Book Creators
with 3rd Level Editors Staff and Students



Primary Level

Illustrated Book Readers and Activities Participants





NCAD DUBLIN

National College of Art and Design

bife
BRAY INSTITUTE OF FURTHER EDUCATION

T
DUBLIN
OLLSCOIL TEICNEOLAÍOCHTA
BHAILE ÁTHA CLIATH
TECHNOLOGICAL
UNIVERSITY DUBLIN



 **TUS**
Limerick School
of Art and Design

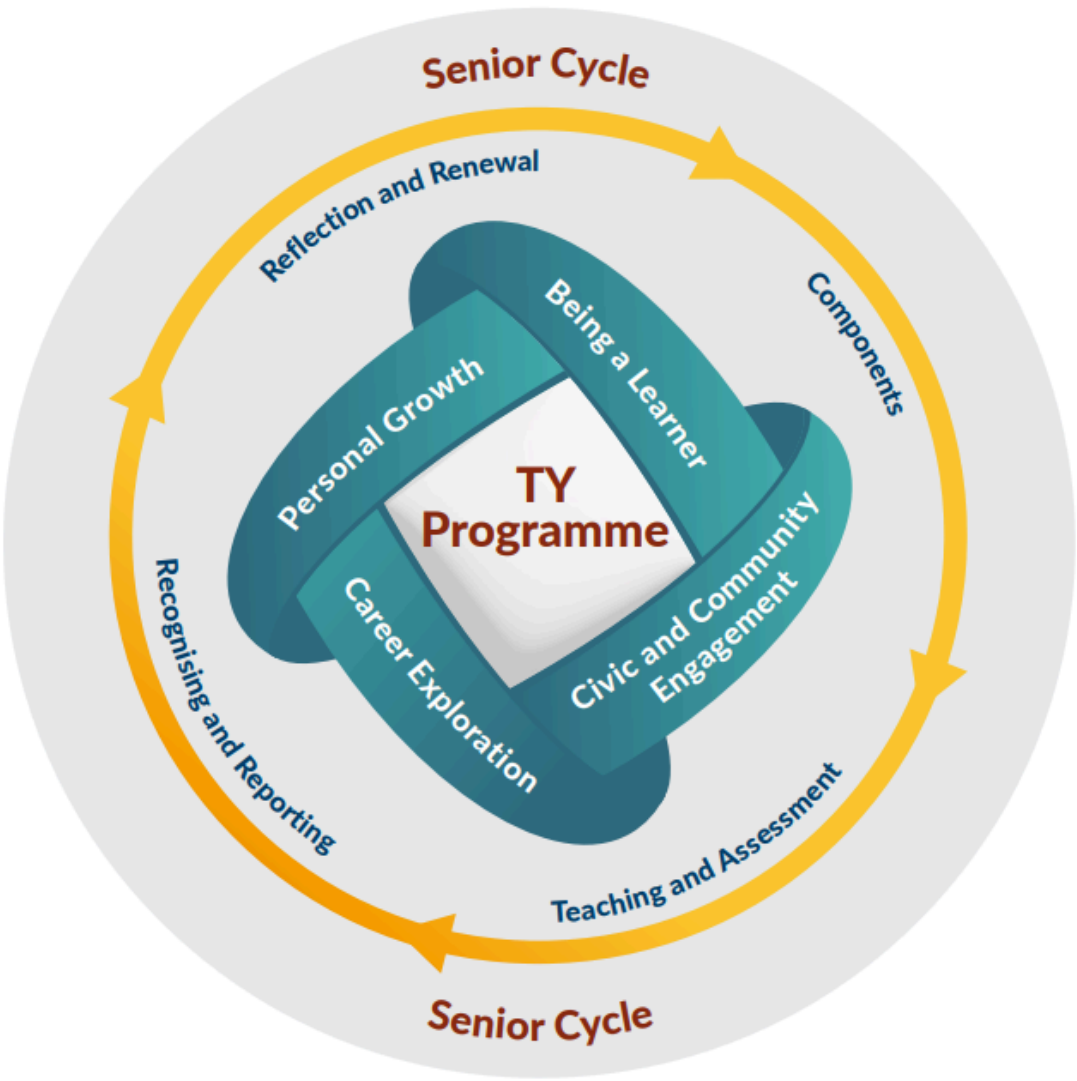

BURREN
COLLEGE of ART

iadt 
DUN LAOGHAIRE

 **BCFE**
Ballyfermot College
of Further Education

 **MTU**
Ollscoil Teicneolaíochta na Mumhan
Munster Technological University

Key Skills of Junior Cycle



Overview of the TY Programme Statement.



Key Competencies in Senior Cycle

A sense of belonging is quite different to a sense of satisfaction

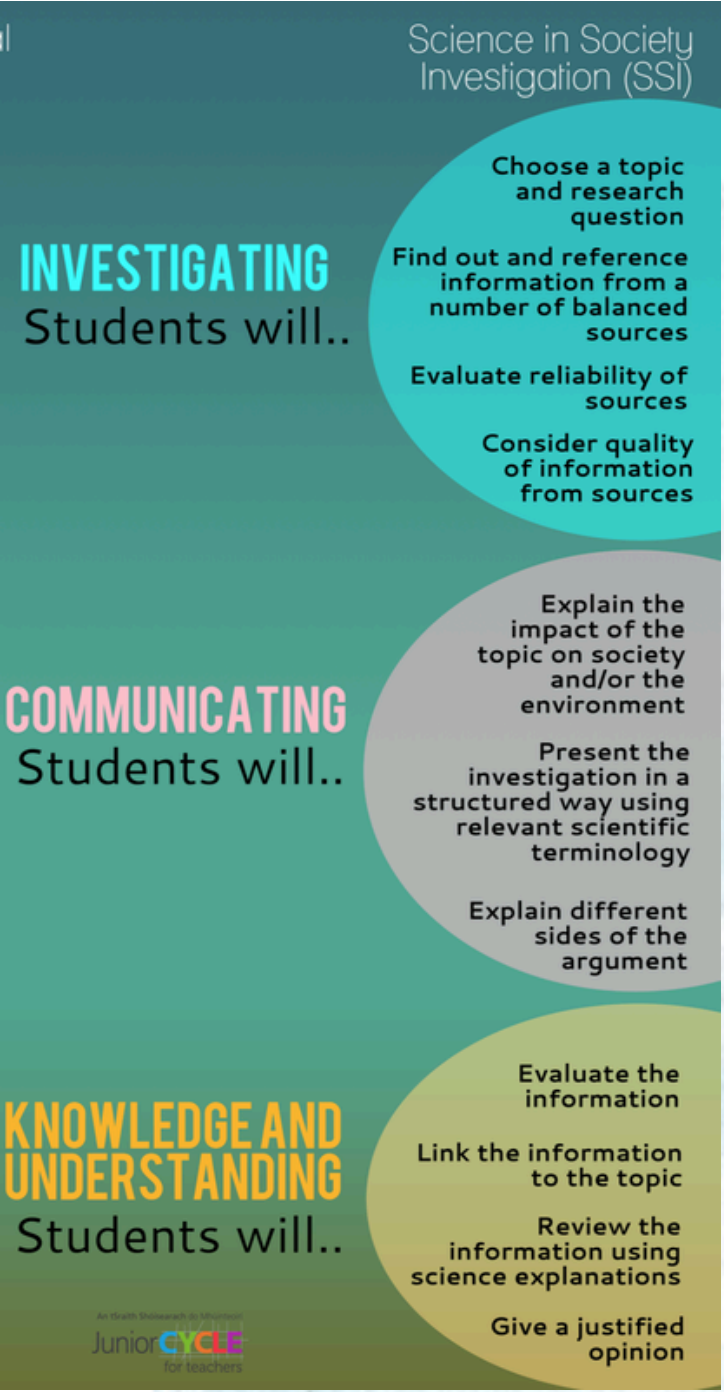
However, both sentiments are required in order to drive a sense of engagement among students.



Insights

- Student engagement is underpinned by emotional factors, such as a sense of belonging, and transactional factors, such as customer satisfaction
- The concepts of 'belonging', 'satisfaction', and 'engagement' are used interchangeably by many RMIT stakeholders
- Belonging and satisfaction are two quite different sentiments that, when combined, contribute to engagement
- A sense of belonging can compensate for poor satisfaction sentiments in the short term

Source: The Belonging Project 'The Ethos of Belonging,' report 2015; Consultations with RMIT stakeholders; March-May 2017; SPP analysis.



Chorus

Transition Year micro-module

Chorus

Developed by Chorus
Led by UCD and Supported by Research Ireland
2025

Chorus

UCD DUBLIN
University College Dublin
Ireland's Global University

Taighde Éireann
Research Ireland

STEAM Skills - Orbital Observatory

In this workbook, you'll explore a range of STEAM skills that support creative, critical, and scientific learning. Each skill is represented by a unique icon floating in an orbital, making it easy to spot when you are using or developing it. As you complete activities, you'll collect the icons that match the skills you've practised in that session. This helps you track your progress and see how your abilities grow across different areas of STEAM.



Question: The Call to Begin
You contemplate the pillar's message and begin to ask yourself "Why have you come here, and what do you hope to find?"



Read the Chorus overview. Record your answer in your journal.

The Pillar of Communication grows when ideas are shared. Speak, record, type, sign, or express them in any way that works for you.

The various Orbitals lead you towards a big opening door, Light floods the chamber you are in, the door leads to what looks like an advanced library.

This is the Archive...



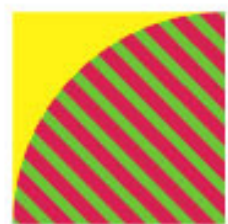


JCSP
Demonstration
Library
Project

MOLI Museum of
Literature
Ireland



GAISCE
THE PRESIDENT'S
AWARD



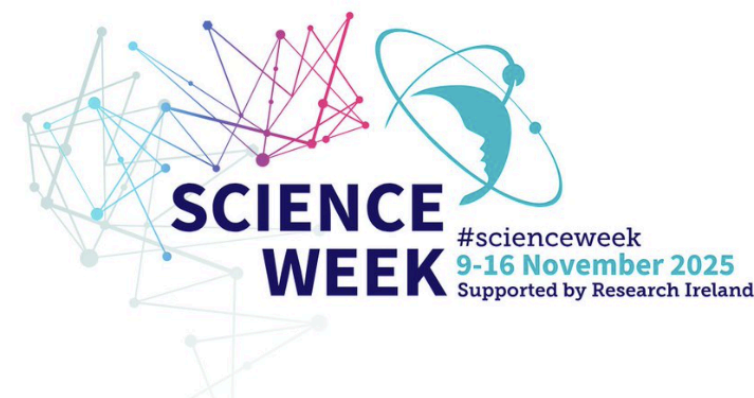
**Creative
Schools**



Creative
Futures
Academy

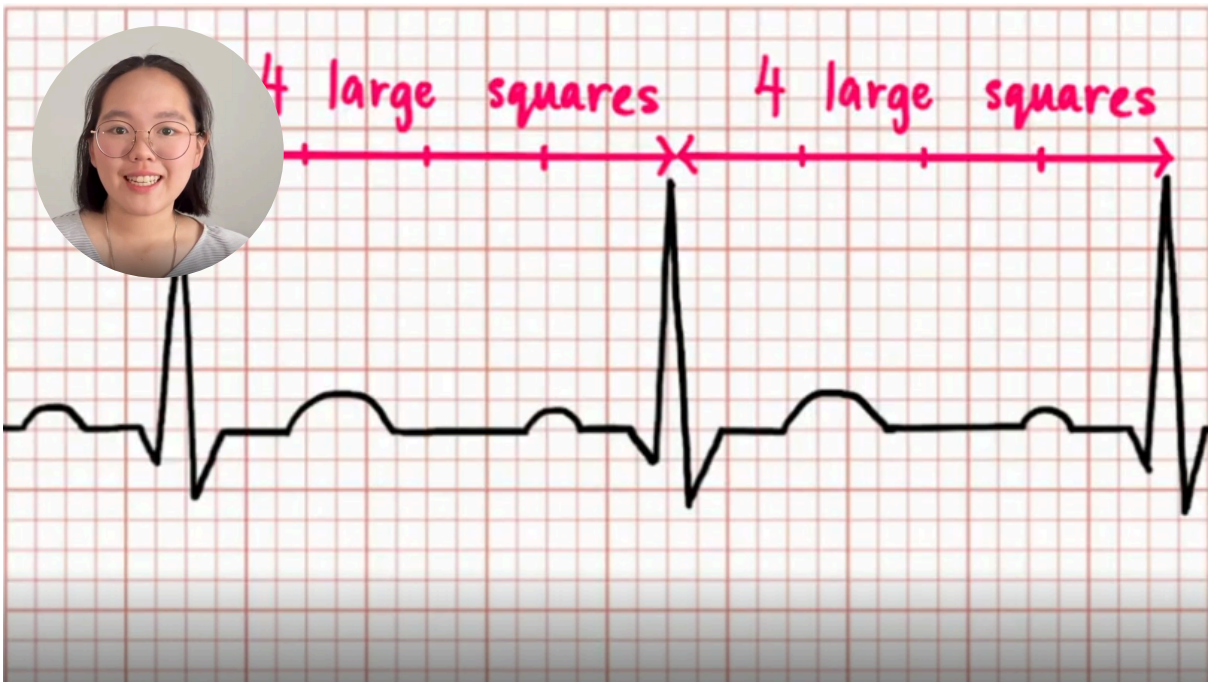
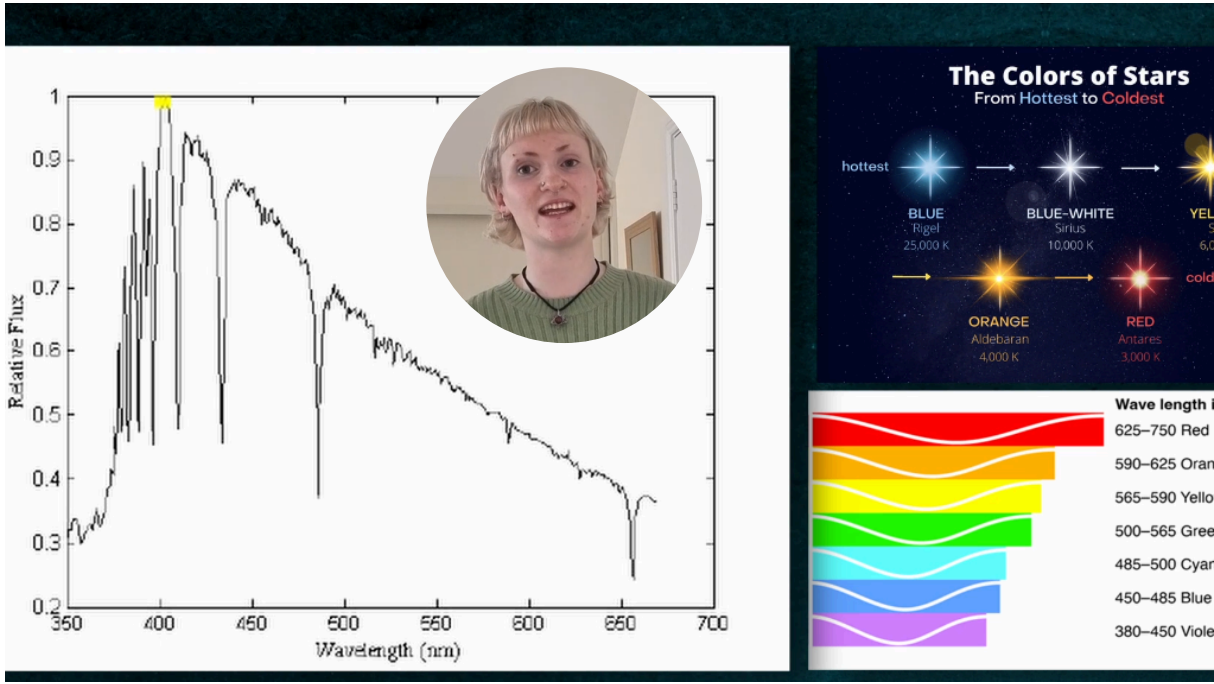


CodeWeek.



**ARTS
IN
EDUCATION**
Na hEalaíona
san Oideachas

IOP
Institute of Physics




Programming Languages (like Python, Java, R)

Programming Language (Foundation)


Collecting basic cake preferences from the user

```
# Flask + SQLite: capture a user's cake preferences
@app.post("/preferences")
def save_preferences():
    data = request.json # flavour, texture, frosting, allergens, city, age
    db.execute("""
        INSERT INTO choices (user_id_hash, flavour, texture, frosting, allergens, city, age, ts)
        VALUES (?, ?, ?, ?, ?, ?, ?, CURRENT_TIMESTAMP)
    """, {
        hash_user_id(data["user_id"]), # privacy: store a hash
        data["flavour"], data["texture"], data["frosting"],
        "-".join(data.get("allergens", [])),
        data.get("city"), data.get("age"),
    })
    return {"ok": True}
```

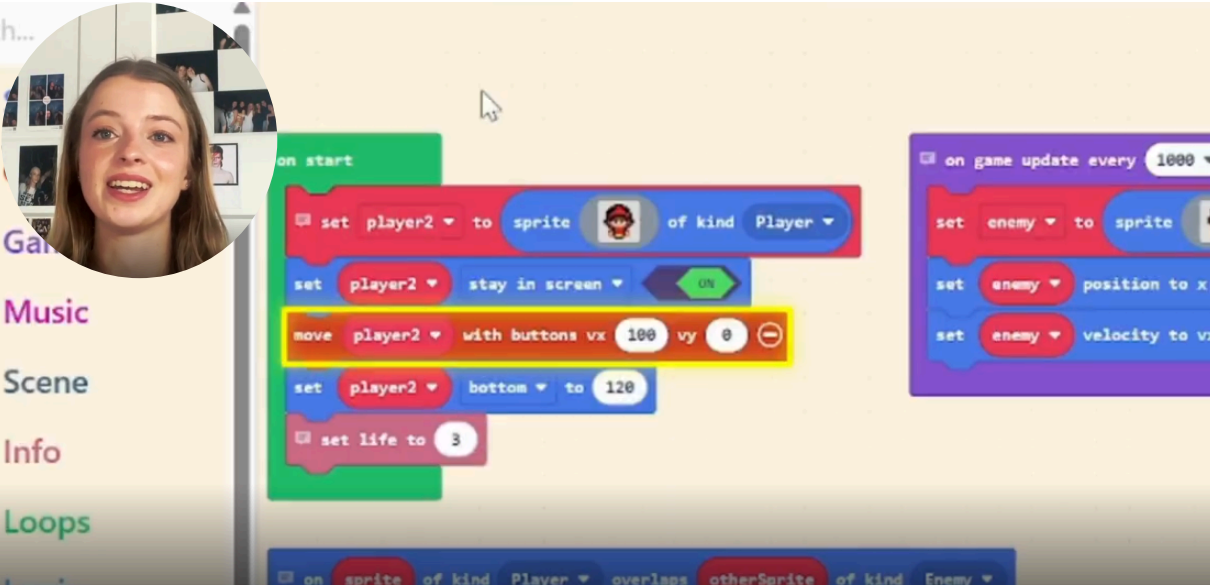
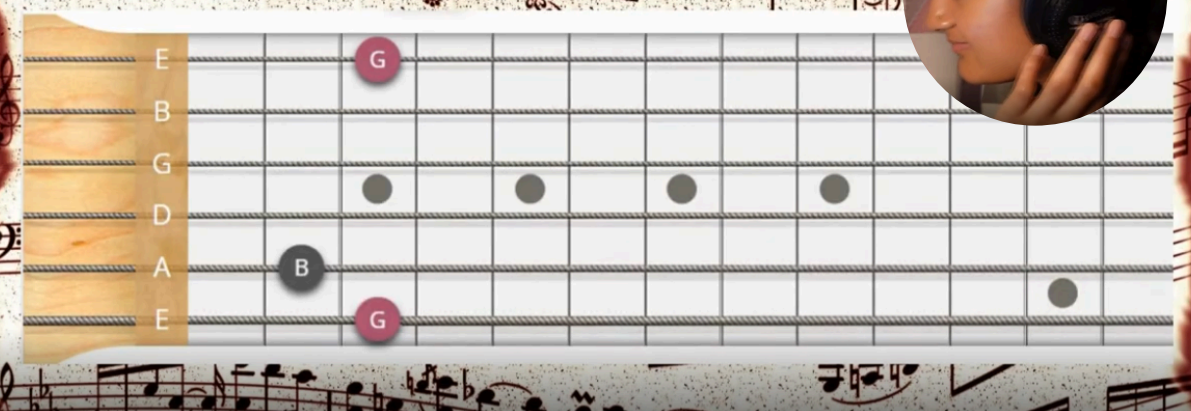


LIGHTING YOUR SCENE:

The online source, "Lighting Diagrams" can help you imagine your scene. Lights can be incorporated in the shot, giving you a sense of space.



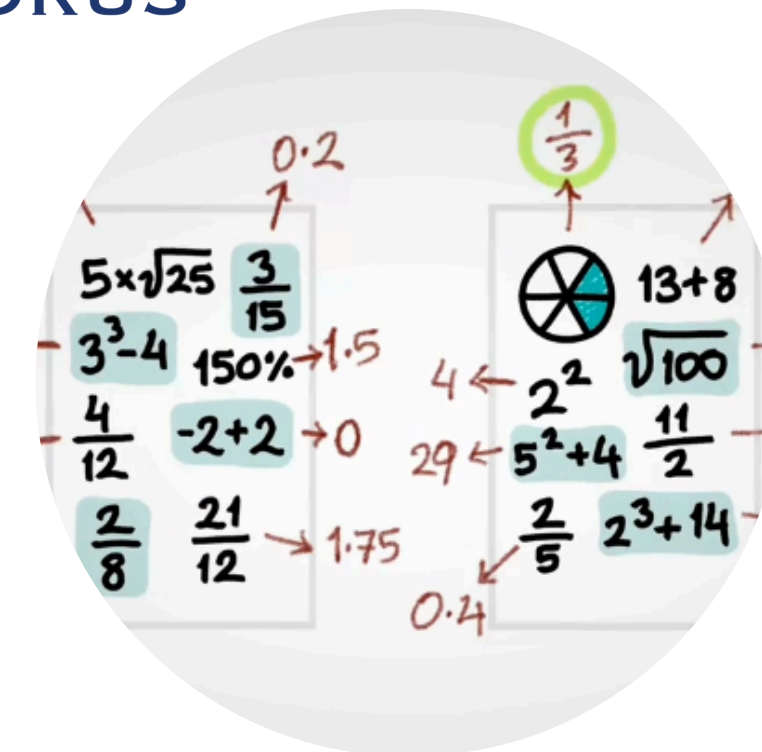
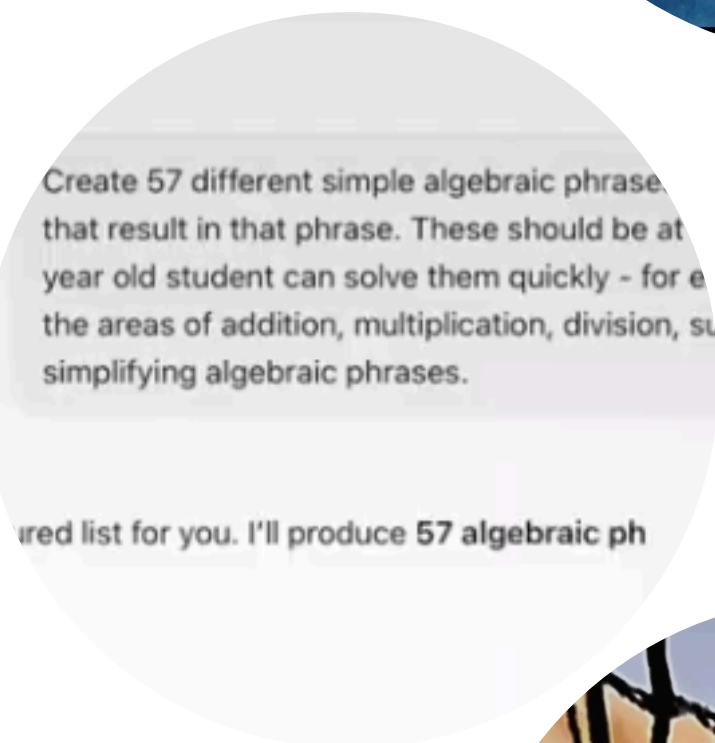
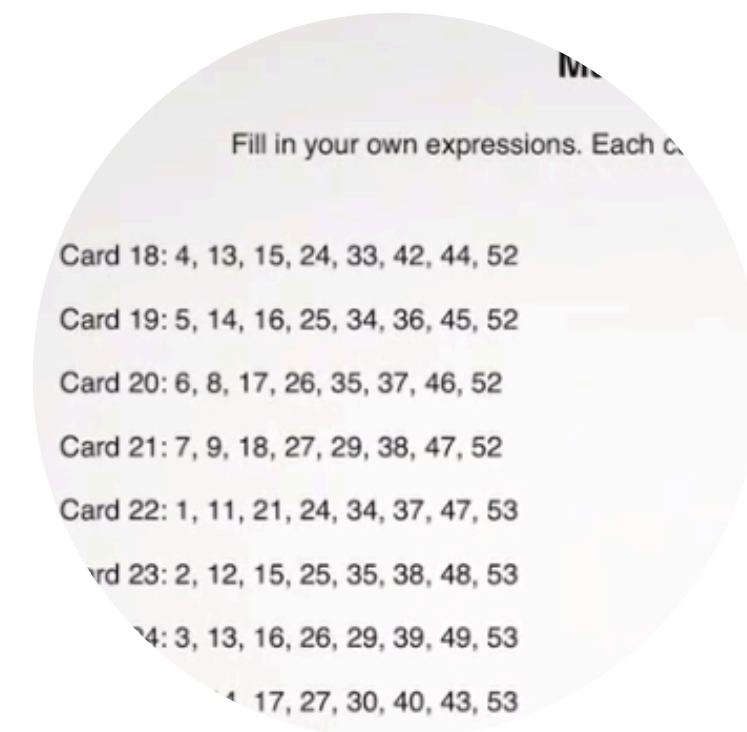
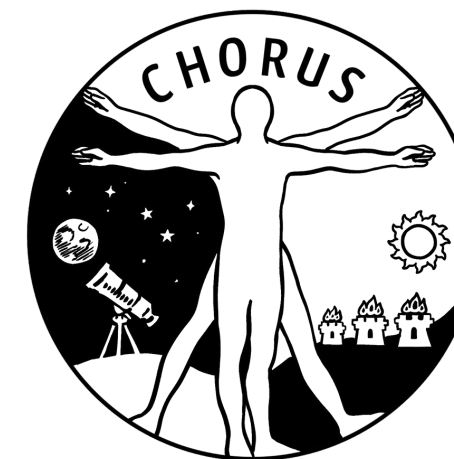
G MAJOR CHORD





Priyanka Saini
UCD Student





Alya Ozalp
NCAD Student

landscape.
rule of thirds. Helps with
balancing. Can enable Grid
on phone to help frame your
shots.

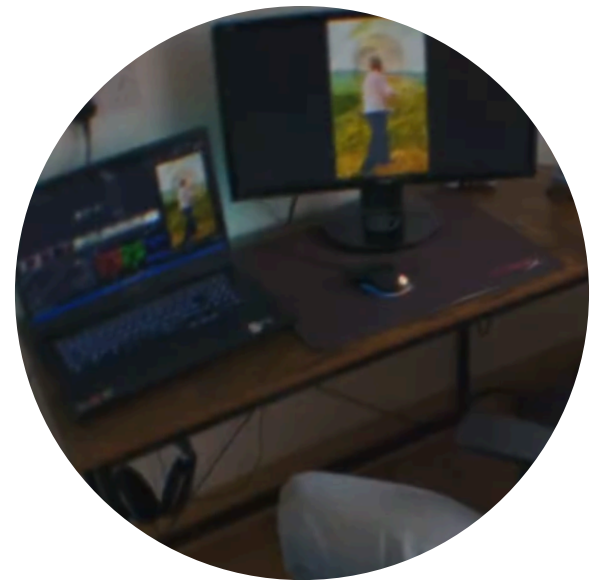
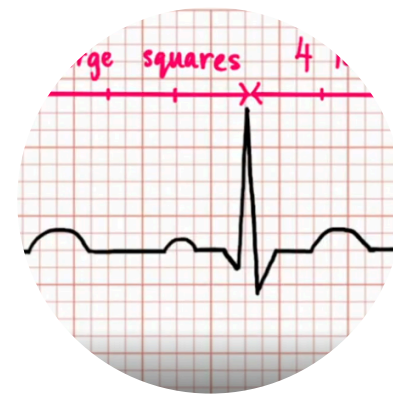
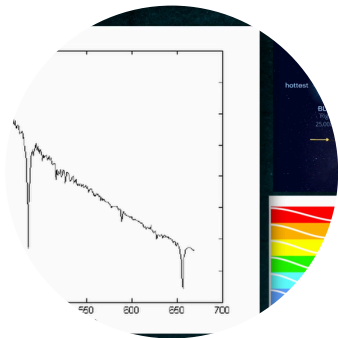
- Shooting 4k for reframing
- Shooting on Sticks, avoid
hand held for the most part,
shaky shots.
- Avoid zooming in with phone
camera, causes loss of detail

If you want slow motion shots
(for a shot of you at work or
roll), record in 60fps. Stick
to 24fps for normal speed

Colin Dragoi

Harsh Light Soft Light

Be careful with
overhead lights
can cast unpleasant
shadows on the face



Colin Dragoi
IADT - Graduate

Polish Prevents Participation

Ethos Shapes Outcome

Design is Emotional,
Not Just Technical

Trust Takes Time

Rigour Doesn't Mean Rigidity

Vulnerability

Enables Co-Creation

Reflection is part of
the Method

Iteration Requires Letting Go

Theory Evolves
Through Practice

Power is Present,
Even in Participation



4D Science Week Showcase



+ CREATE

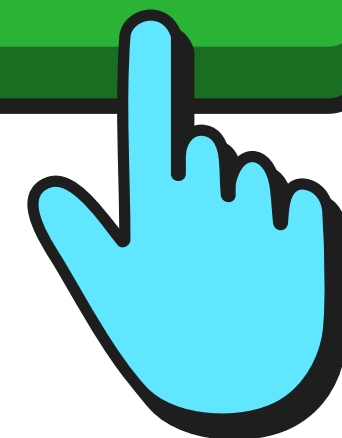
CREATE

create

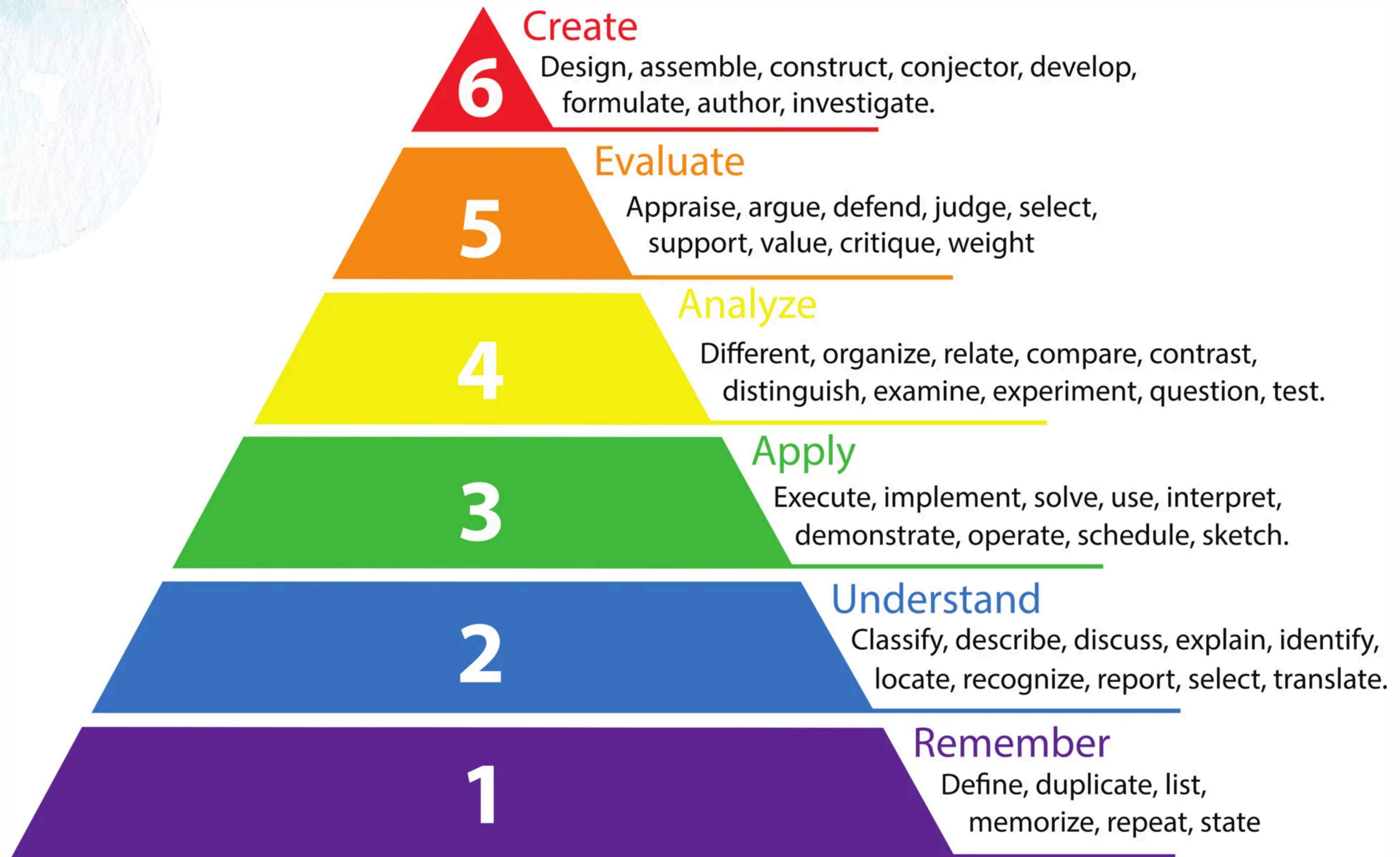
Create



CREATE



create CREATE



Overview of Bloom's Taxonomy





Thank
you



University College Dublin
Ireland's Global University



Taighde Éireann
Research Ireland