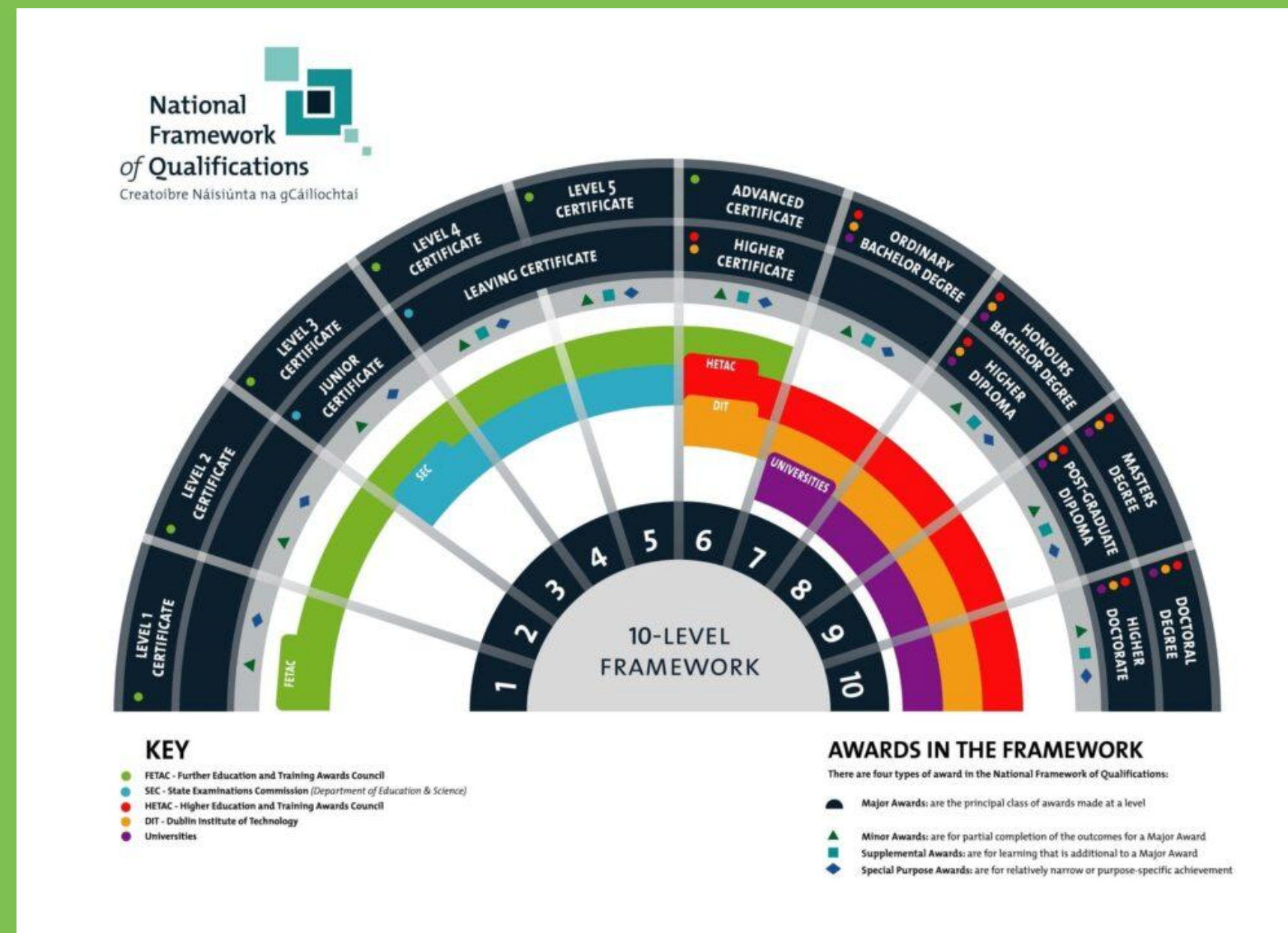


Engaging Postgraduates

Who are Postgrads?

Ireland is one of the only countries to refer to them as
'post'graduates

In Ireland, a postgraduate diploma, postgraduate degree or Master's
degree



How many postgraduates are in Ireland?

- **About 30% of students in ROI enrolled in 23/24.**
- **Around 61,500 postgraduate students enrolled in 23/24 .**

Why talk about engaging postgrads separately to engaging undergraduates, or students in general ?

- Shorter course lengths.
- Large cohort of international and students from different undergraduate institutions.
- More likely to be working or have family responsibilities etc.
- PhD poverty line
- Varying welfare needs (i.e., homesickness, financial struggles, imposter syndrome, isolation.

What can institutions consider?

Socially + Integration

- Orientation.
- Student Services (Looking at others e.g., TCD, SETU).
- Events (Older cohort).

Academic and Representation

- Clear academic policies
- Positions on faculty boards and governance committees

What SU's can consider?

- **Developing and giving opportunities to postgrads**
(E.g., research reps, boards etc.
- **Looking at tailored events**
- **Reach out to institutions to gain knowledge on postgraduate policies**
- **Lobby the institution**

Advice for postgrads

- **Don't assume student services are solely for undergraduates.**
- **Look into your graduate office and events they run.**
- **If you want an event etc. ask your SU.**
- **Asking your school + faculty to host events/workshops.**

Any Questions?

**Thank
you!!**