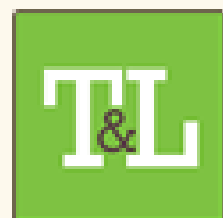


# Student Partnership for Student Success Strategies

NStEP National Student Engagement Network – December 01, 2022

**Enabling Policies & Practices for Student Success Initiative. Maynooth University**

Funded by:



**NATIONAL FORUM**  
FOR THE ENHANCEMENT OF TEACHING  
AND LEARNING IN HIGHER EDUCATION



**Maynooth  
University**  
National University  
of Ireland Maynooth





STUDENT PARTNERSHIP FOR STUDENT SUCCESS STRATEGIES  
MU STUDENT SUCCESS INITIATIVE

## Session Plan

Student Success Initiative Introduction  
Consultation Process Overview  
Challenges & Recommendations  
Group Activity: Diversity of Student Voice



**Maynooth  
University**  
National University  
of Ireland Maynooth





1

# Introduction

Lisa O'Regan  
Aisling Flynn



## STUDENT PARTNERSHIP FOR STUDENT SUCCESS STRATEGIES MU STUDENT SUCCESS INITIATIVE

### OVERVIEW

#### AIM

To develop a strategic framework to further embed a shared vision and culture of student success at Maynooth University.

#### PARTICIPANTS

- Sponsor: Prof Alison Hood
- Programme Manager: Lisa O'Regan
- Initiative Partner: Maynooth Students Union
- Consultation Group
- Initiative Steering Group
- Working Group

FUNDED BY: National Forum, SATLE 2020

### WORKPACKAGES

- WP1 - Explore approaches to support student engagement and re-engagement during Covid.
- WP2- Develop a Student Success Strategy and proposed Framework for Student Success at Maynooth University.
- WP3 - Explore how student data can inform student success and develop relevant Guidelines.



**Maynooth  
University**  
National University  
of Ireland Maynooth





STUDENT PARTNERSHIP FOR STUDENT SUCCESS STRATEGIES  
MU STUDENT SUCCESS INITIATIVE

## CONSULTATION GROUP DESIGN

- One staff member from each academic dept
- One staff member from each professional service unit
- One student representative from each Department, recruited from MSU Academic Reps
- Clubs and Societies' Student representatives
- Postgrad representatives, as well as members of the MSU Senate
- Maynooth Access Programme and Experiential Learning Office Ambassadors



**Maynooth University**  
National University  
of Ireland Maynooth

**MSU**  
Maynooth Students' Union  
Aontas na Mac Léinn Mhá Nuad



2

# Consultation Process Overview

Lisa O'Regan  
Aisling Flynn



## STUDENT PARTNERSHIP FOR STUDENT SUCCESS STRATEGIES MU STUDENT SUCCESS INITIATIVE



### 1) Consultation Group Meeting One

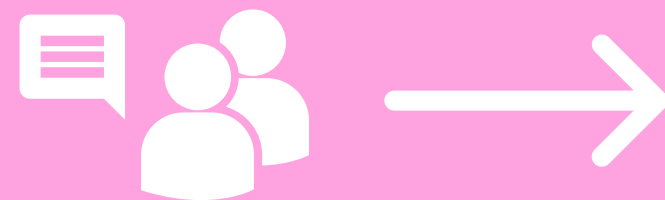
Nov. 2021

#### Introduction & Launch

- Introduce University and Consultation Group to the project.
- Introductions: Get to know your group.
- Short Group Work Exercise.

#### NEXT STEP:

Share Info Packs & National Forum Digital exercise.



### 2) Consultation Group Meeting Two

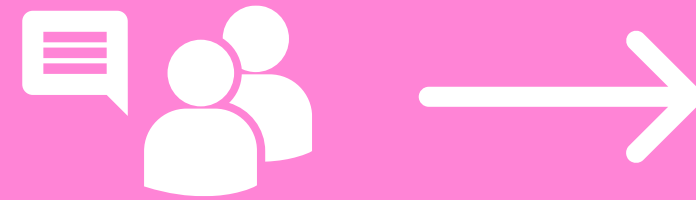
Dec. 2021

#### Workshop Session

- Discuss MU practice related to Student Success.
- Data for Student Success Themes Discussion
- Student Success Themes Discussion

#### NEXT STEP:

Learning Analytics survey.



### 3) Consultation Group Meeting Three

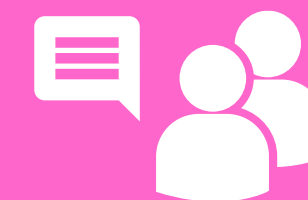
Jan. 2021

#### Feedback & Workshop

- Review and feedback on the first draft of Student Success Principles.
- Review and feedback on draft Student Success Analytics Principles.

#### NEXT STEP:

Incorporate feedback and send drafts to Steering Group & T&L Committee for Feedback.



### 4) Consultation Group Meeting Four

Apr. 2021

#### Feedback & Workshop

- Student Success Analytics Principles: Scenario Workshop
- Student Success Principles: How we Embed workshop.
- Sharing findings from Student Success Campaign

#### NEXT STEP:

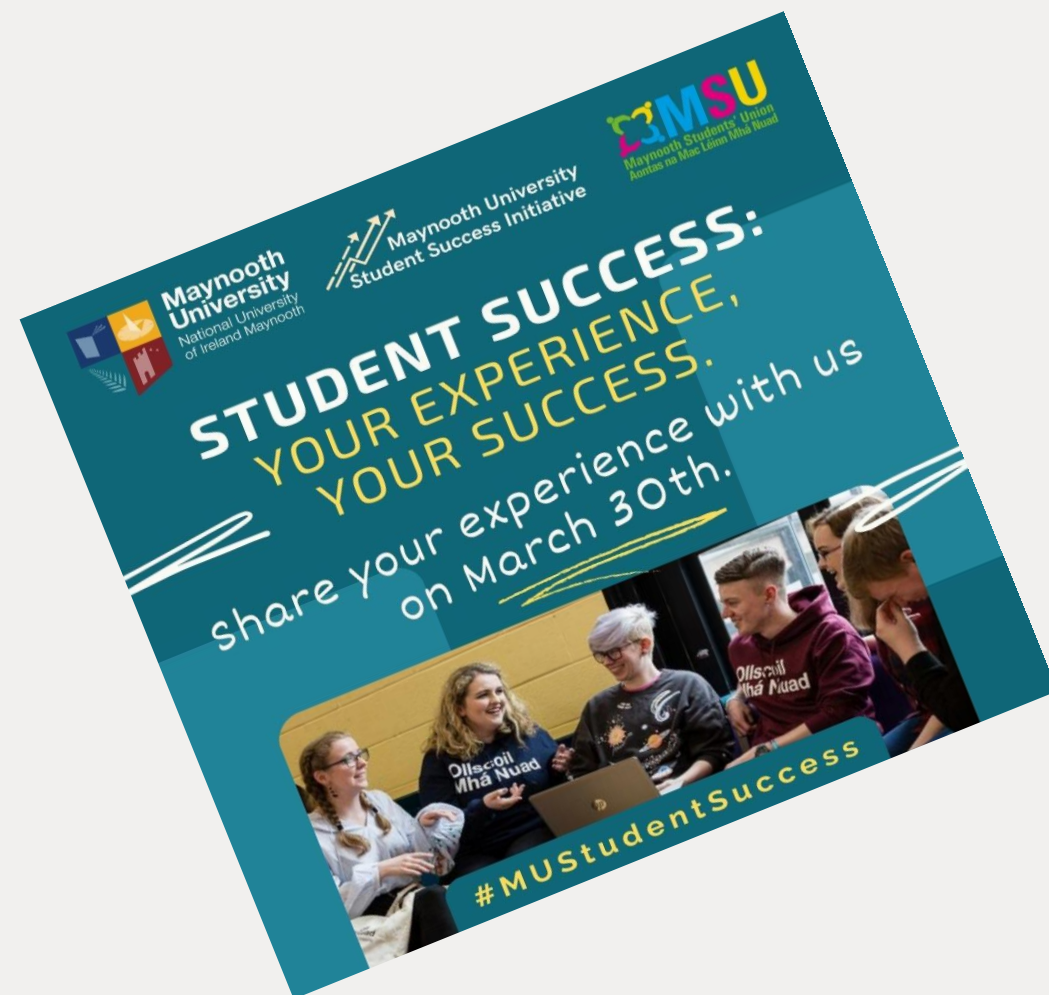
Incorporate feedback. Develop proposed action plan.





## STUDENT PARTNERSHIP FOR STUDENT SUCCESS STRATEGIES MU STUDENT SUCCESS INITIATIVE

# Student Success Campaign



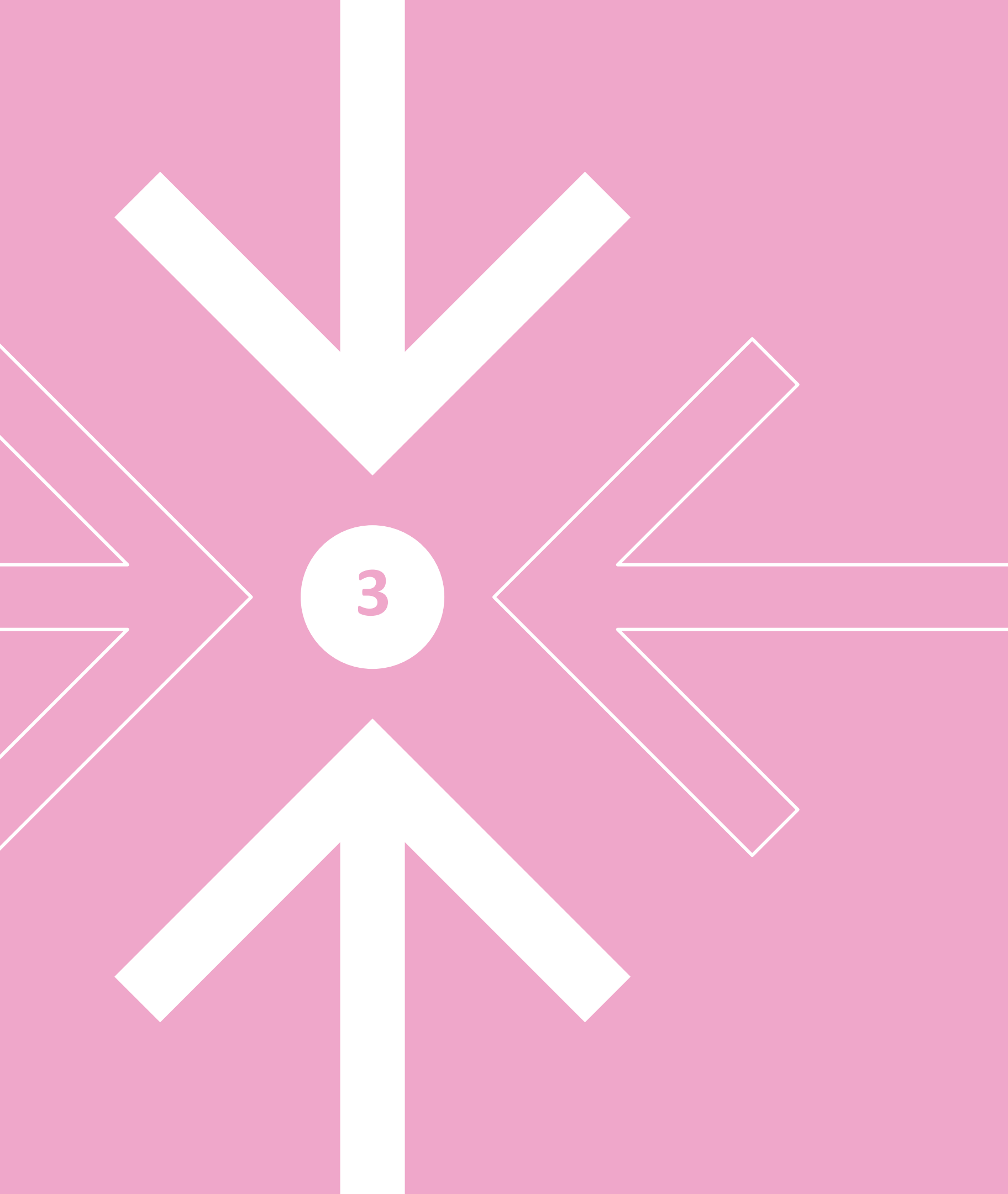




STUDENT PARTNERSHIP FOR STUDENT SUCCESS STRATEGIES  
MU STUDENT SUCCESS INITIATIVE

# Student Success Campaign





# Challenges and Recommendations

Conor Cronin  
Eddie Corr



# REPRESENTATION

## Challenge:

Ensuring broad representation, particularly across the student body.

## Recommendation:

Seek fair representation: Use a variety of sources and methods of invitation across different interest groups and cohorts.







## STUDENT PARTNERSHIP FOR STUDENT SUCCESS STRATEGIES MU STUDENT SUCCESS INITIATIVE

# PLANNING

### Challenge:

Members engaging alongside their main commitments, whether work or study.

### Recommendation:

Involve a variety of staff and student roles in the process at an early stage to develop ownership and responsibility.



**Maynooth  
University**  
National University  
of Ireland Maynooth





## STUDENT PARTNERSHIP FOR STUDENT SUCCESS STRATEGIES MU STUDENT SUCCESS INITIATIVE

# ENGAGEMENT

### Challenge:

Building trust in the process while keeping members updated and informed.

### Recommendation:

Use briefing documents to aid common understanding, be clear on expectations, and feedback results to members.



**Maynooth  
University**  
National University  
of Ireland Maynooth

**MSU**  
Maynooth Students' Union  
Aontas na Mac Léinn Mhá Nuad





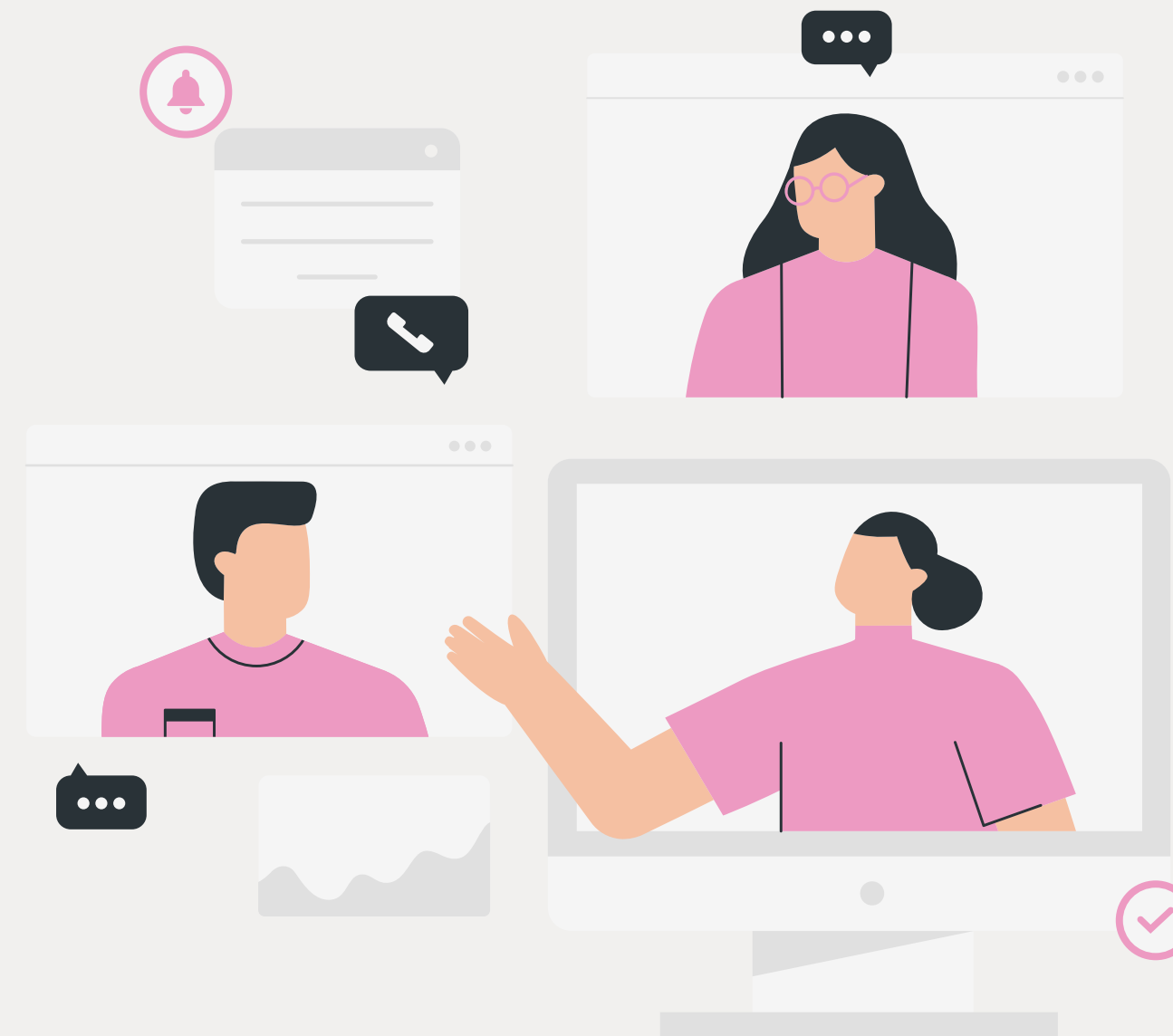
## POWER DYNAMICS

### Challenge:

Students are inherently at a power dynamics disadvantage for many reasons.

### Recommendation:

Acknowledge from the start & encourage staff and students to co-design strategies that work for them to address the imbalance.





## STUDENT PARTNERSHIP FOR STUDENT SUCCESS STRATEGIES MU STUDENT SUCCESS INITIATIVE

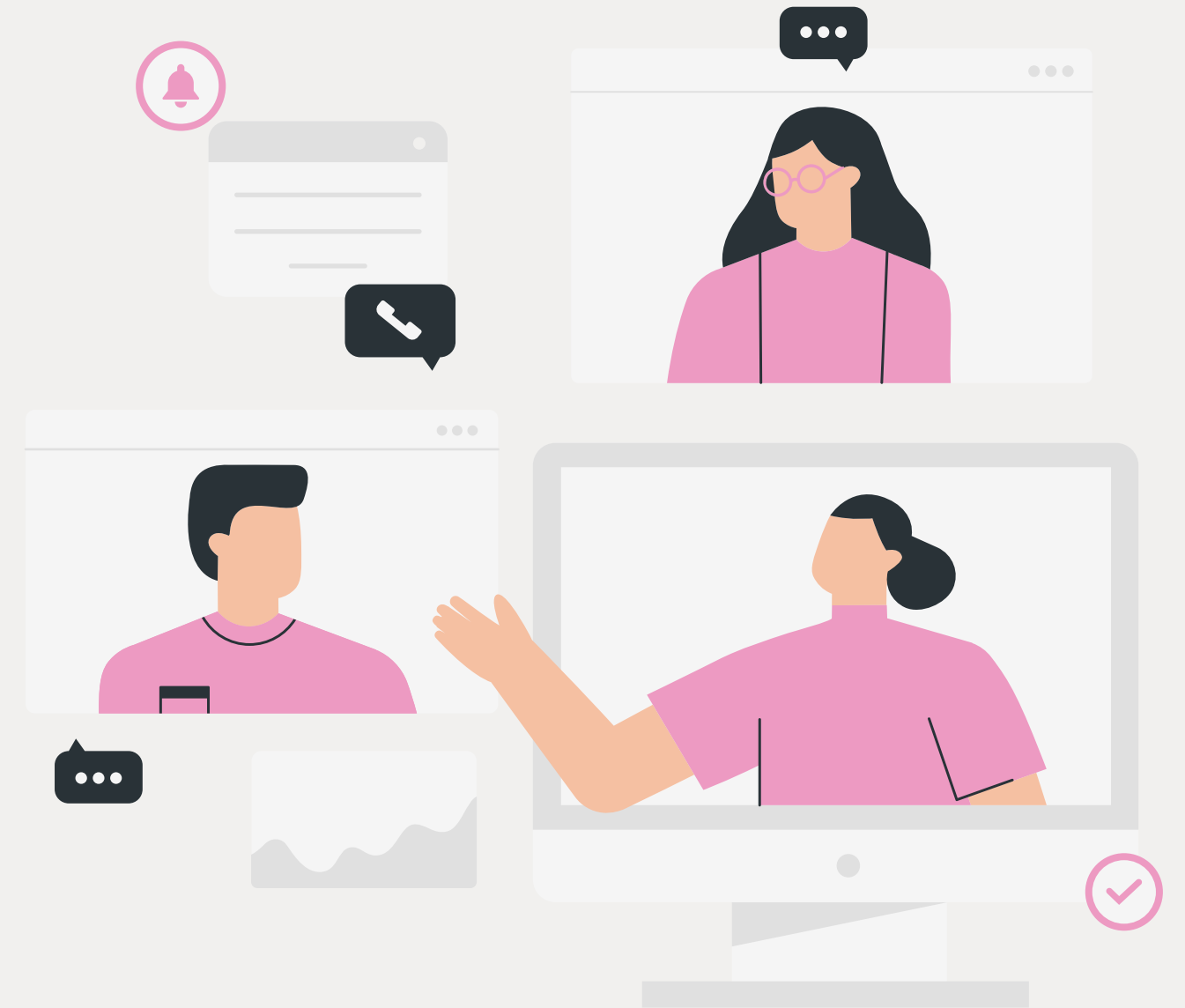
# EMPOWERMENT

### Challenge:

Identifying highly engaged members willing to take on extra responsibility.

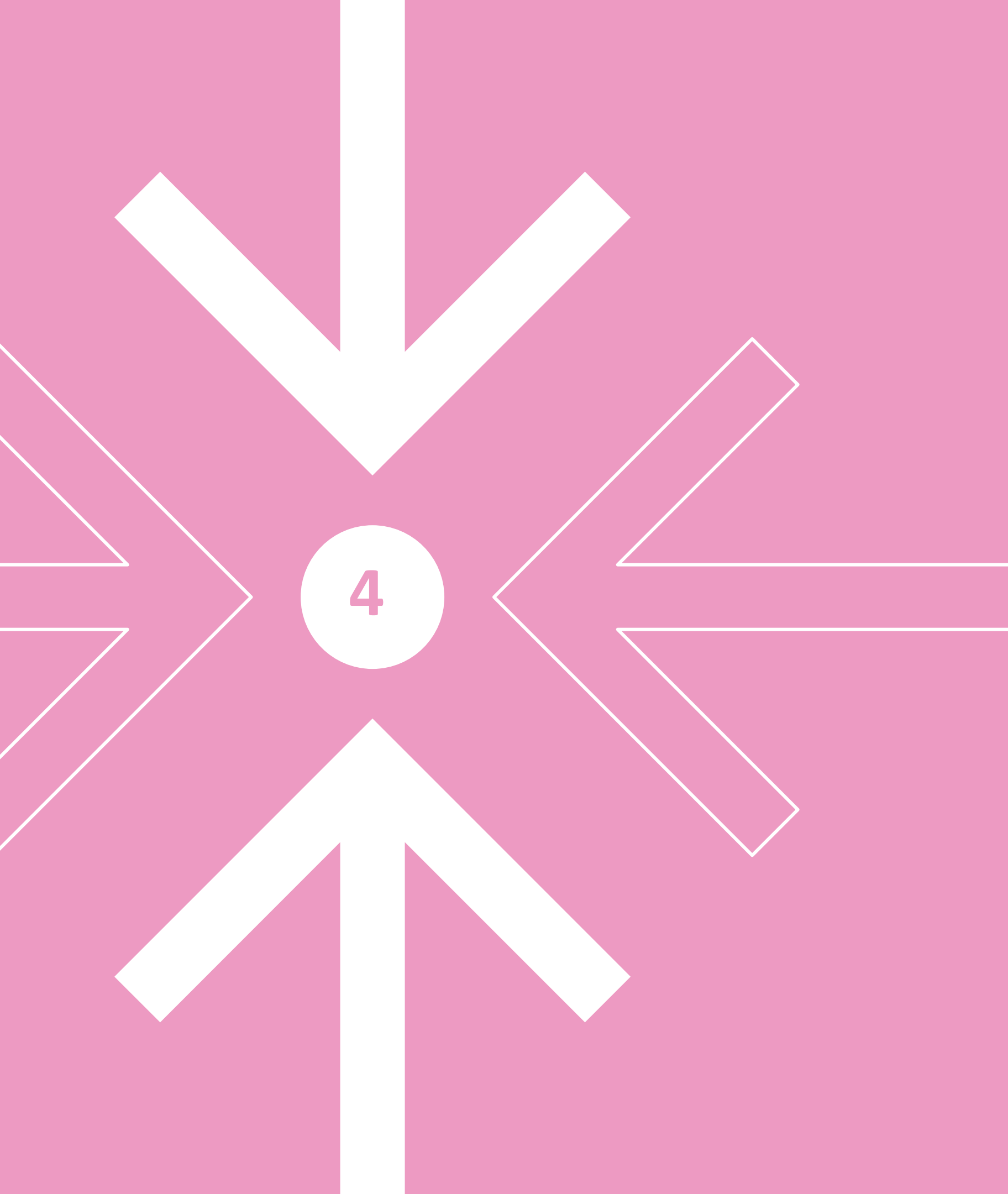
### Recommendation:

Empower your members to take control of tasks within the project over time and become accustomed to leadership roles.



**Maynooth  
University**  
National University  
of Ireland Maynooth

**MSU**  
Maynooth Students' Union  
Aontas na Mac Léinn Mhá Nuad



# Diversity of Student Voice

Alex Balfe  
Aisling Flynn



# Group Reflection and Discussion

- Discuss the following question within your group

**Q1. What things need to change to achieve real diversity of the student's voice in student success initiatives and policy development?**

- Rank the top two priorities for your group and present them back



**20**

## Minute Activity

- Split into mixed groups of 5-7 and introduce yourselves.
- Use the flipchart, post it notes and markers provided.
- Your assigned group facilitator will record your discussed priorities on padlet.
- Nominate one person in your group to present back your top two ranked priorities(1 minute)





# Capturing the Diversity of the Student Voice

Enhancing Student Success Initiatives and Policy Development

## Guidance for this Padlet

### WHAT TO DO

Each group facilitator should record their group's discussion of priorities under the relevant group number to the right. They can engage with the padlet in three ways.

1. Adding a comment for each priority identified *(recommended)*
2. Adding an individual post underneath your group's submission *(optional)*
3. Liking any other group's post to show agreement *(optional)*

**Note:** To access newer posts/add your own post, you may need to scroll down inside each column on the page. This will not affect the rest of the page.

## GROUP 1: Priorities



## GROUP 2: Priorities



## GROUP 3: Priorities



## GROUP 4: Priorities







STUDENT PARTNERSHIP FOR STUDENT SUCCESS STRATEGIES  
MU STUDENT SUCCESS INITIATIVE

## Initiative Team

**Simon Ahern**

MU Access Programme

**Fanahan Barry**

Education Technology Officer (AY21-22)

**Alex Balfe**

MSU Vice President Education

**Eddie Corr**

Data & Student Success Project Officer

**Liam Cosgrove**

MSU President (AY 21-22)

**Conor Cronin**

Student Member

**Niall Daly**

MSU President (AY21-22 & 22-23)

**Saoirse De Paor**

Teaching & Learning Librarian

**Dr Colleen Doyle**

Student Support Officer

**Marianne Dunne**

Director of Student Services, WP1 Lead

**Rose Donovan**

Academic Advisor

**Rachel Fagan**

Examinations Officer

**Dr Aisling Flynn**

Head of Student Success & Skills, WP2  
Lead AY22-23

**Prof Alison Hood**

Dean of Teaching and Learning

**Sousanne Issaad**

NF Student Associate

**Katharina Kurtz**

Student Member

**Dr Teresa Lee**

Director of Quality

**Dr Laura McElwain**

Institutional Research Officer, WP3 Lead

**Emma McDermott**

Student Help Desk Team Leader

**John McLoughlin**

Director IT Services

**John O'Hara**

Student Success Project Officer (2021)

**Lisa O'Regan**

Head of Centre for Teaching and Learning  
SATLE 2020 Programme Manager

**Ian Russell**

Student Engagement Officer

**Dr Rose Ryan**

Director of Access

**Gillian Sheehy**

ODTL Administrator

**Michaela Waters**

NF Student Associate



**Maynooth University**  
National University  
of Ireland Maynooth

**MSU**  
Maynooth Students' Union  
Aontas na Mac Léinn Mhá Nuad



STUDENT PARTNERSHIP FOR STUDENT SUCCESS STRATEGIES  
MU STUDENT SUCCESS INITIATIVE

**THANK YOU!**



**Maynooth  
University**  
National University  
of Ireland Maynooth



Maynooth Students' Union  
Aontas na Mac Léinn Mhá Nuad